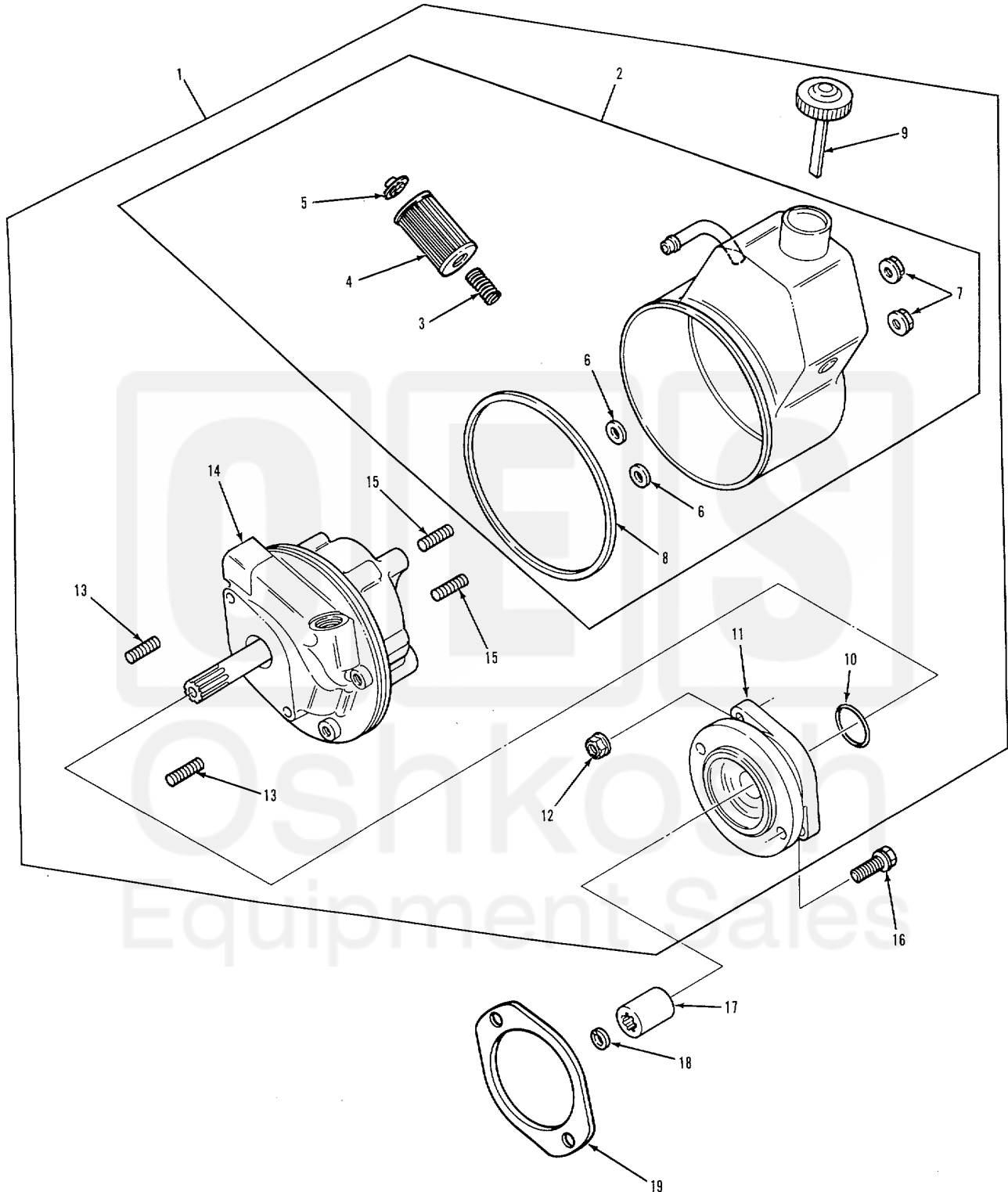


SECTION II



TA 237988

FIGURE 105. POWER STEERING PUMP.

| SECTION II | | | | TM9-2320-283-24P | |
|------------|----------|-------|-------------|---------------------------------------|-----|
| (1) | (2) | (3) | (4) | (5) | (6) |
| ITEM NO | SMR CODE | CAGEC | PART NUMBER | DESCRIPTION AND USABLE ON CODES (UOC) | QTY |

GROUP:1410 HYDRAULIC PUMP OR FLUID MOTOR ASSEMBLY

FIGURE 105. POWER STEERING PUMP.

| | | | | | |
|----|-------|-------|---------------|---|---|
| 1 | PAOFF | 19954 | ER-16439-1 | PUMP ASSEMBLY, POWER..... | 1 |
| 2 | PFFFF | 19954 | ERS-Z7491-00S | .RESERVOIR, PUMP ASSY | 1 |
| 3 | KFFZZ | 19954 | ER-72126 | ..SPRING FILTER PART CF KIT P/N ERS..... | 1 |
| | | | | -27549-PL..... | |
| 4 | KFFZZ | 19954 | ER-93983 | ..FILTER PART OF KIT P/N ERS-27549-..... | 1 |
| | | | | PL..... | |
| 5 | KFFZZ | 19954 | ER-93978 | ..CUP AND SPACER PART OF KIT PIN ERS..... | 1 |
| | | | | -275 79-PL 549-PL..... | |
| 6 | KFFZZ | 19954 | ER-93765 | ..WASHER PART OF KIT P/N ERS-27549- | 2 |
| | | | | PL..... | |
| 7 | KFFZZ | 19954 | ER-99401 | ..NUT, HEXAGON FLANGE PART OF KIT P/N | 2 |
| | | | | ERS-21549-PL | |
| 8 | KFFZZ | 19954 | ER-82141PL | ..GASKET PART OF KIT P/N ERS-27549-..... | 1 |
| | | | | PL..... | |
| 9 | PAOZZ | 19954 | ER-24926 | .CAP, FILLER OPENING | 1 |
| 10 | PCOZZ | 19954 | 008761-026 | .PACKING, PREFORMED | 1 |
| 11 | PFOLZ | 19954 | FR-99083 | .CONNECTOR FLUID, PUM..... | 1 |
| 12 | PAOZZ | 19554 | ER-94107 | .NUT, PLAIN, EXTENEDE | 2 |
| 13 | PAOZZ | 19954 | ER-97066 | .STUD, PLAIN | 2 |
| 14 | PAFFF | 19954 | ER-16228-1 | .PUMP ASSEMBLY, POWER..... | 1 |
| 15 | PAFZZ | 19954 | ER-97043 | .STUD..... | 1 |
| 16 | PAOZZ | 15434 | 3010596 | SCREW', ASSEMBLED WAS..... | 2 |
| 17 | PAOZZ | 15434 | 199589 | COUPLING, SHAFT, RIGI PUMP DRIVE..... | 2 |
| 18 | PAOZZ | 15434 | 100475 | RING, RETAINING..... | 1 |
| 19 | PCOZZ | 15434 | 154916 | GASKET..... | 1 |

END OF FIGURE

105-1